



\*With Approved Credit -  
Special Rates

Super Lawn Trucks™

# READY FOR IMMEDIATE DELIVERY

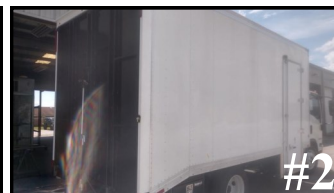


## 2019 Isuzu NPR-HD Open Landscape

- NEW 2019 Isuzu, HE404 Gas, Crew Cab, 176" WB, 14500 lb. GVW, Automatic, A/C, PW/PDL, AM/FM/CD, Fire Ext., Triangle Kit
- 18' Standard Landscape Body with 14' Flat Floor Space, 4' Dovetail, 60" Headboard with Basket and Shelf, 16" Sides, Passenger Side Fold Down, 4 Steps, Black in Color
- Shovel Racks (x2)
- Blower Rack
- Water Cooler Rack

60 Month Lease w/ 30% Residual: \$723.45  
 60 Month Purchase: \$1077.88  
 72 Month Purchase: \$947.25

**Total - \$51,460**



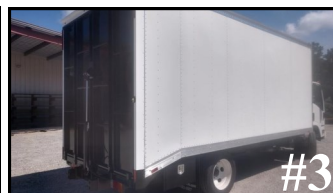
## 2019 Isuzu NPR-HD Single Cab Starting at \$827/Month

NEW 2019 Isuzu, FE304 Gas, Single Cab, 150" WB, 14500 lb. GVW, Automatic, A/C, PW/PDL, AM/FM/CD, Fire Ext., Triangle Kit

- 16' SLT ECO™ Body-14' Flat Floor, 2' Interior Dovetail - 96" W x 85" H hardwood floor, translucent roof, 3/4" thick interior plywood walls 4' from floor, 4 slats above. Interior front wall 3/4" plywood from ceiling to floor, Aluminum exterior, White in Color
- 36" Maximizer Swinging Side Door With Two Step Pedestrian Entry
- Hydra-Ramp System - SLT ECO™ - Patent # 6,102,646 - Single Gate, Push Button Operation, Single Hydraulic Cylinder, All Steel Construction, Anti Slip Coating, Ramp Serves as Rear Door, Black in Color. 2500lb Weight Rating

60 Month Lease w/ 30% Residual: \$827  
 60 Month Purchase: \$1,090  
 72 Month Purchase: \$942

**Total - \$55,443**



## 2020 Isuzu NPR-HD Single Cab Starting at \$800/Month

NEW 2020 Isuzu, FE404 Gas, Single Cab, 176" WB, 14500 lb. GVW, Automatic, A/C, PW/PDL, AM/FM/CD, Fire Ext., Triangle Kit

- 18' SLT ECO™ Body-16' Flat Floor, 2' Interior Dovetail - 96" W x 85" H hardwood floor, translucent roof, 3/4" thick interior plywood walls 4' from floor, 4 slats above. Interior front wall 3/4" plywood from ceiling to floor, Aluminum exterior, White in Color
- Hydra-Ramp System - SLT ECO™ - Patent # 6,102,646 - Single Gate, Push Button Operation, Single Hydraulic Cylinder, All Steel Construction, Anti Slip Coating, Ramp Serves as Rear Door, Black in Color. 2500lb Weight Rating

60 Month Lease w/ 30% Residual: \$800  
 60 Month Purchase: \$1,054  
 72 Month Purchase: \$912

**Total - \$56,090**



## 2019 Isuzu NPR-HD Crew Cab Starting at \$858/Month

NEW 2019 Isuzu, HE404 Gas, Crew Cab, 176" WB, 14500 lb. GVW, Automatic, A/C, PW/PDL, AM/FM/CD, Fire Ext., Triangle Kit

- 18' SLT ECO™ Body-16' Flat Floor, 2' Interior Dovetail - 96" W x 85" H hardwood floor, translucent roof, 3/4" thick interior plywood walls 4' from floor, 4 slats above. Interior front wall 3/4" plywood from ceiling to floor, Aluminum exterior, White in Color
- Hydra-Ramp System - SLT ECO™ - Patent # 6,102,646 - Single Gate, Push Button Operation, Single Hydraulic Cylinder, All Steel Construction, Anti Slip Coating, Ramp Serves as Rear Door, Black in Color. 2500lb Weight Rating

60 Month Lease w/ 30% Residual: \$858  
 60 Month Purchase: \$1,112  
 72 Month Purchase: \$965

**Total - \$59,590**

Payments based on "A+" tier credit approval, \$2,000 down payment, plus tax, tag, title & doc fee.  
 Prices F.O.B. 1610 Peach Parkway Fort Valley, GA 31030



Super Lawn Trucks™

*\*With Approved Credit -  
Special Rates*

# READY FOR IMMEDIATE DELIVERY



## 2019 Isuzu NPR-HD Crew Cab With Door Starting at \$898/Month

- NEW 2019 Isuzu, HE404 Gas, Crew Cab, 176" WB, 14500 lb. GVW, Automatic, A/C, PW/PDL, AM/FM/CD, Fire Ext., Triangle Kit
- 18' SLT ECO™ Body-16' Flat Floor, 2' Interior Dovetail - 96" W x 85" H hardwood floor, translucent roof, 3/4" thick interior plywood walls 4' from floor, 4 slats above. Interior front wall 3/4" plywood from ceiling to floor, Aluminum exterior, White in Color
- 36" Maximizer Side Door with Two Step Pedestrian Entry
- Hydra-Ramp System - SLT ECO™ - Patent # 6,102,646 - Single Gate, Push Button Operation, Single Hydraulic Cylinder, All Steel Construction, Anti Slip Coating, Ramp Serves as Rear Door, Black in Color. 2500lb Weight Rating

60 Month Lease w/ 30% Residual: \$898  
 60 Month Purchase: \$1,163  
 72 Month Purchase: \$1,009

**Total - \$62,285**



## 2019 Isuzu NPR-HD with 2.5 Debris Dumper Starting at \$1,023.16/Month

NEW 2019 Isuzu, FE304 Gas, Single Cab, 132" WB, 14500 lb. GVW, Automatic, A/C, PW/PDL, AM/FM/CD, Fire Ext., Triangle Kit

- 12' SLT ECO™ Body-10' Flat Floor, 2' Interior Dovetail - 96" W x 85" H hardwood floor, translucent roof, 3/4" thick interior plywood walls 4' from floor, 4 slats above. Interior front wall 3/4" plywood from ceiling to floor, Aluminum exterior, White in Color
- Hydra-Ramp System - SLT ECO™ - Patent # 6,102,646 - Single Gate, Push Button Operation, Single Hydraulic Cylinder, All Steel Construction, Anti Slip Coating, Ramp Serves as Rear Door, Black in Color. 2500lb Weight Rating
- 2.5 Cubic Yard Debris Dumper w/ Flip Top Hinged Lid and Slide Out Step
- Double Utility Shelf, Hand and Power Tool Storage System, Back-Up Camera and Monitor, 26/14 Fuel Station

60 Month Lease w/ 30% Residual: \$1023  
 60 Month Purchase: \$1316  
 72 Month Purchase: \$1150

**Total - \$66,321**



## 2017 Isuzu NPR Starting at \$864/Month

- 2017 Isuzu, Single Cab, Gas, 150" WB, 12000lb GVW, Automatic, A/C, PW/PDL
- 16' SLT LDX Body
- Exterior Dovetail Ramp 2500lb Loading Capacity, 39/14 Fuel Station, 36" Underbody Toolbox, Double Utility Shelf, Hand and Power tool Storage System, GPS

60 Month Lease w/ 30% Residual: \$864  
 60 Month Purchase: \$1015  
 72 Month Purchase: \$883



**Total - \$51,777**

### TO SEE MORE PHOTOS OF ANY OF THESE TRUCKS VISIT:

[WWW.USEDSUPERLAWNTRUCKS.COM](http://WWW.USEDSUPERLAWNTRUCKS.COM)

### OR CALL TOLL FREE: (866) 923-0027

### OR EMAIL: [sales@superlawntrucks.com](mailto:sales@superlawntrucks.com)

### WE DESIGN AND MANUFACTURE THE WORLD'S MOST AFFORDABLE, MOST DURABLE, AND EASY TO USE

Payments based on "A+" tier credit approval, \$2,000 down payment, plus tax, tag, title & doc fee.  
Prices F.O.B. 1610 Peach Parkway Fort Valley, GA 31030